

# CAMILLA

PORTFOLIO

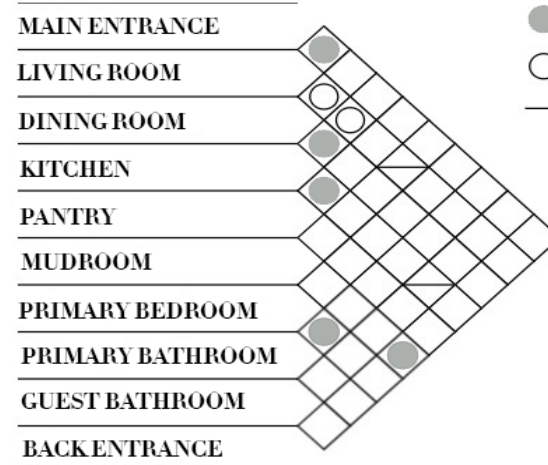
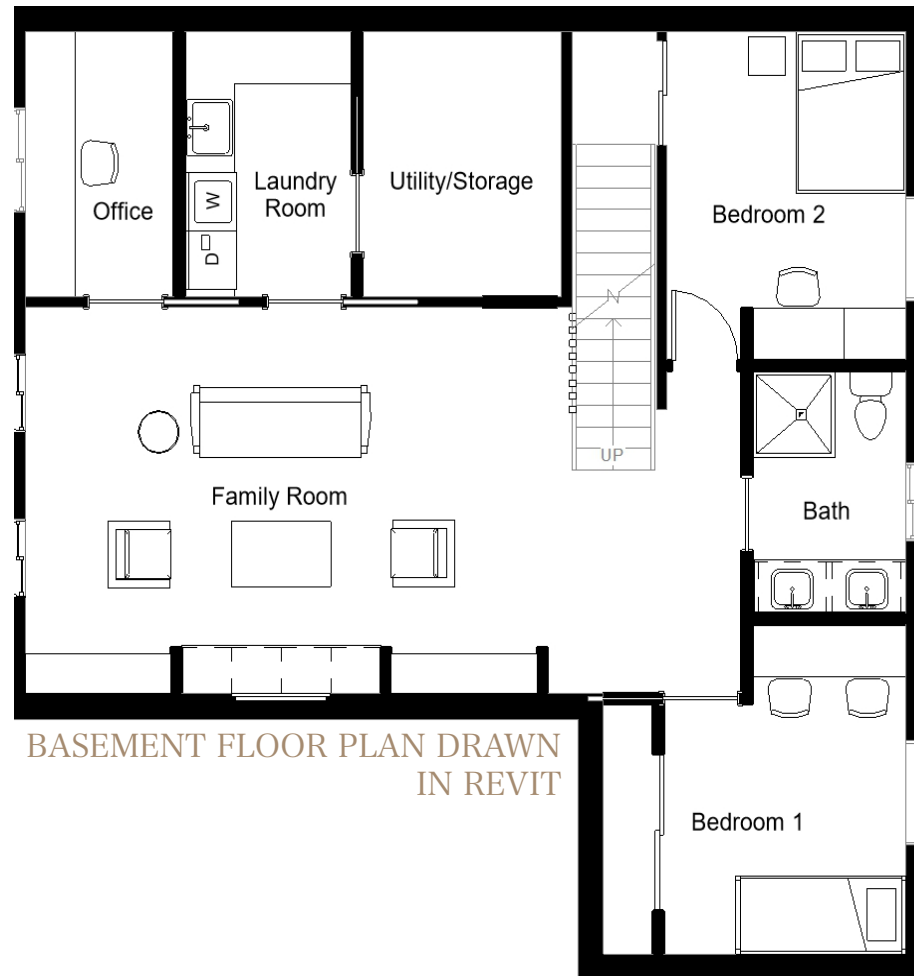


# JOHNSON RESIDENCE

The client wanted to update their 2,300 sqft house into an efficient and open floor plan. With a complete furniture refresh and addition of light and storage this home conserves the inviting and cozy feel of the 1950's bungalow-style home while creating a modern and functional environment.

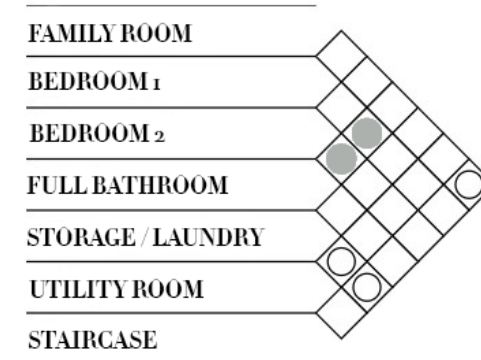


DINING ROOM DRAWN IN SKETCH UP AND RENDERED IN ENSCAPE



- PRIMARY ADJACENCY
- SECONDARY ADJACENCY
- UNDESIRED ADJACENCY

MAIN FLOOR ADJACENCY MATRIX CREATED IN PHOTOSHOP



- PRIMARY ADJACENCY
- SECONDARY ADJACENCY
- UNDESIRED ADJACENCY

BASEMENT ADJACENCY MATRIX CREATED IN PHOTOSHOP

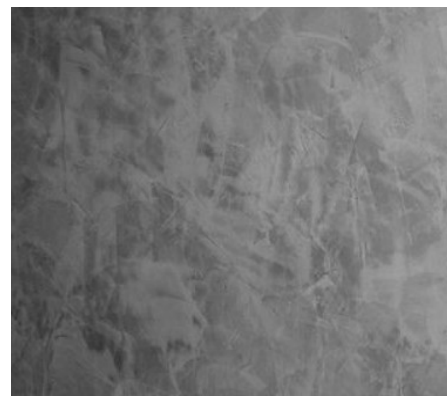




LIVING ROOM DRAWN IN SKETCH UP AND RENDERED IN ENSCAPE



BLACK MAGIC NON-COM-BUSTIBLE TRIM



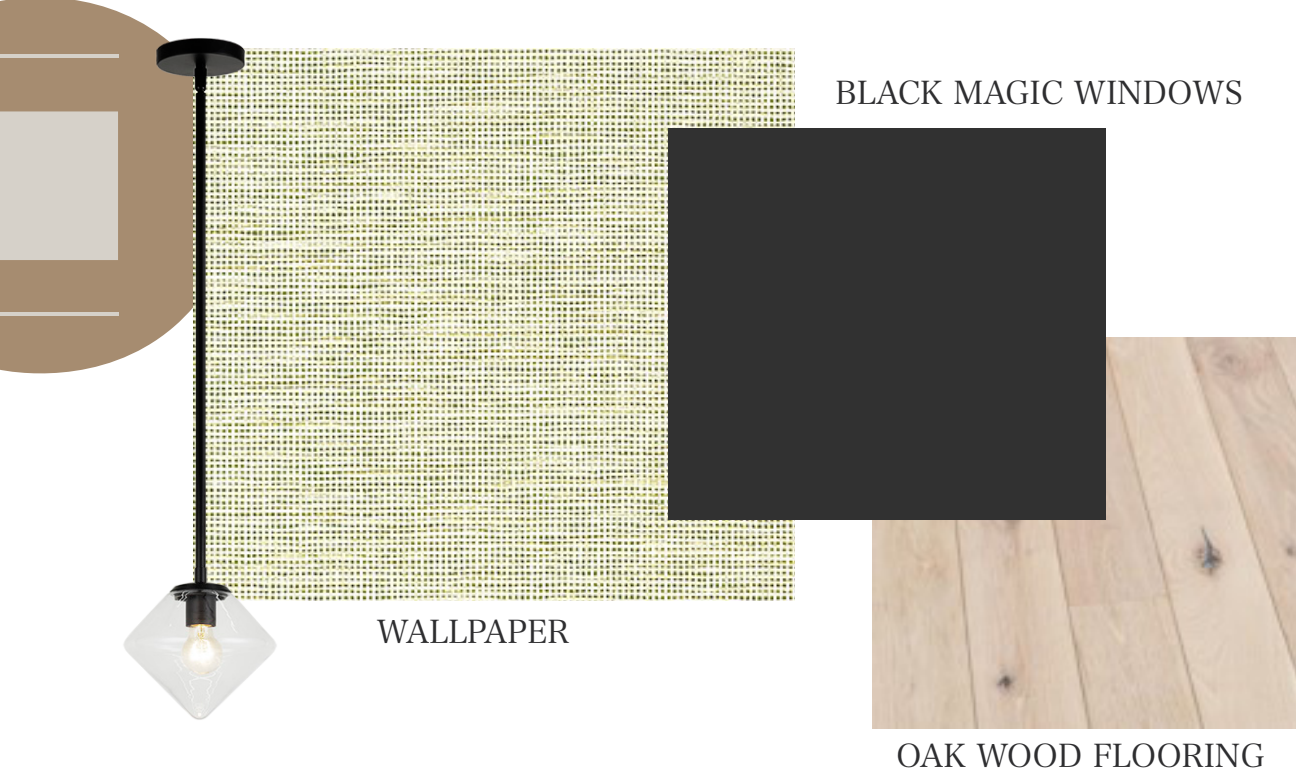
VENETIAN PLASTER



GAS FIREPLACE







BLACK MAGIC WINDOWS

WALLPAPER

OAK WOOD FLOORING



PRIMARY BATH DRAWN IN SKETCH UP AND RENDERED IN ENSCAPE



PRIMARY BEDROOM DRAWN IN SKETCH UP AND RENDERED IN ENSCAPE





BEDROOM 1 SKETCHED IN PROCREATE



MUDROOM DRAWN IN SKETCH UP AND RENDERED IN ENSCAPE



LAUNDRY DRAWN IN SKETCH UP AND RENDERED IN ENSCAPE





# ORCHARD

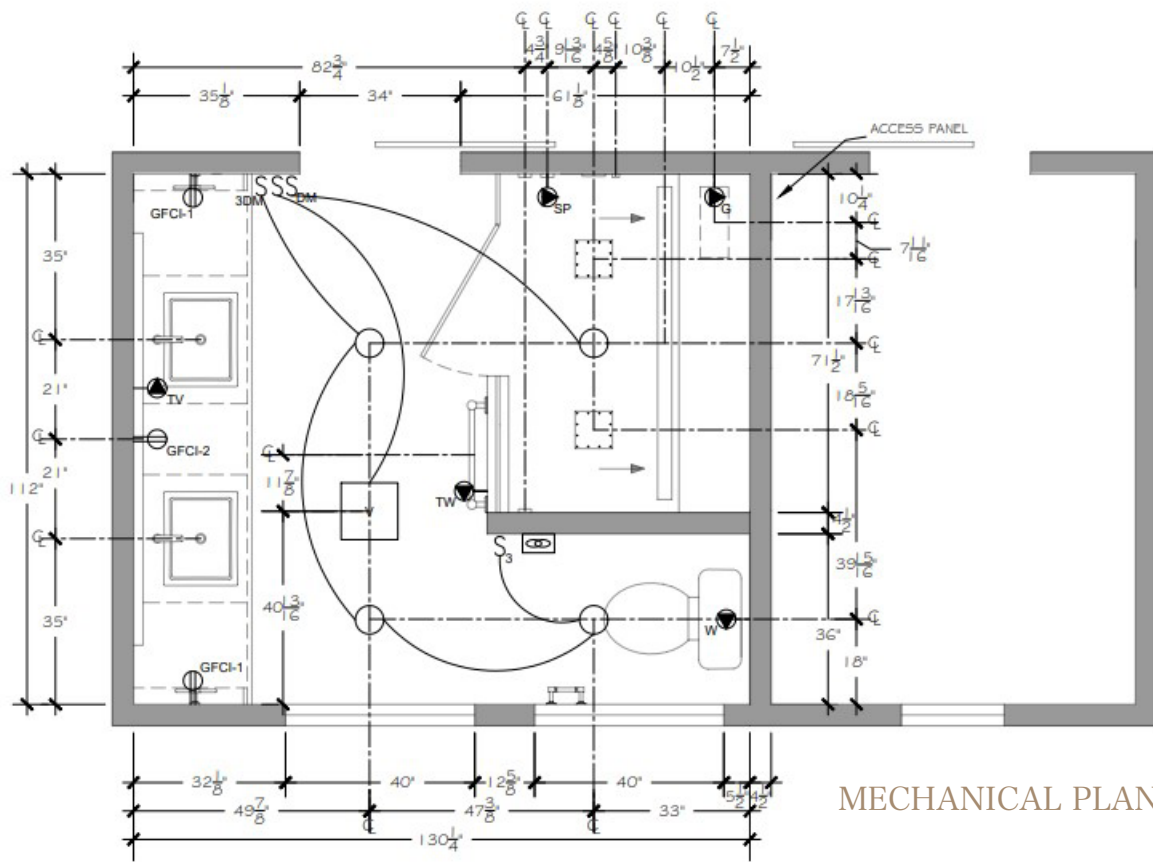
# PRIMARY BATH

The Orchard family requested the remodel of their primary bath to be functional and modern while conserving the feel of a Tuscan home. The new layout is NKBA approved and with the addition of a steam shower, radiant floor, intelligent windows and smart fixtures.



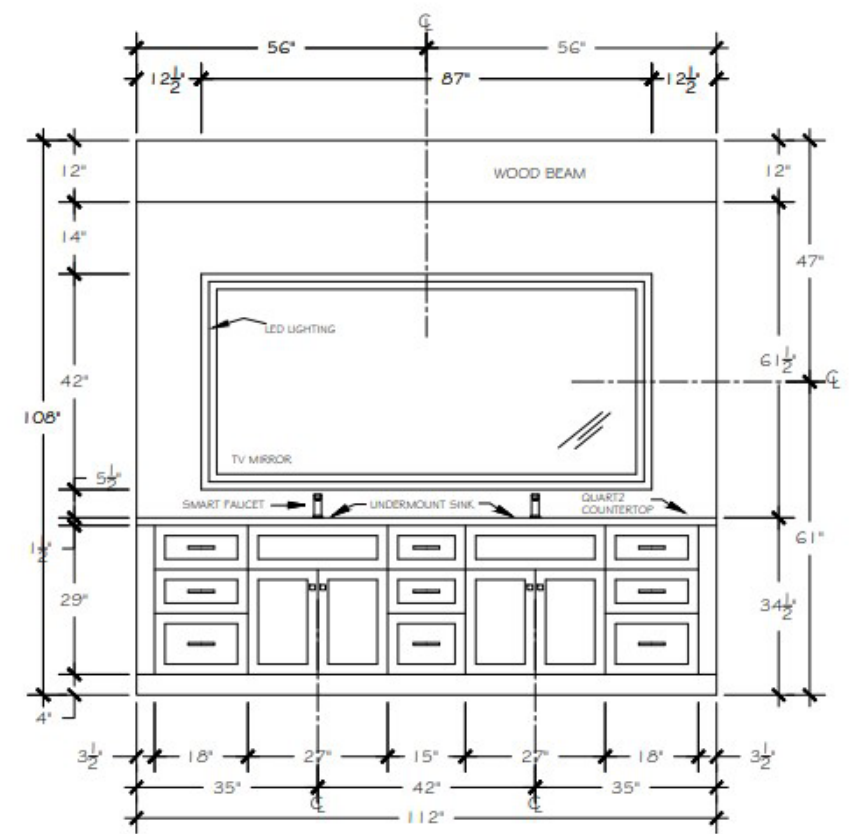
BATHROOM DRAWN IN SKETCHUP AND RENDERED IN ENSCAPE





- TV TV MIRROR OUTLET, 240V, 50 AMP, +50" AFF
- W SMART TOILET OUTLET, +15" AFF
- TW TOWEL WARMER OUTLET, 120V, 20 AMP, +36" AFF
- G GENERATOR OUTLET, 240V, 42 AMP, +10" AFF
- SP STEAM CONTROL OUTLET, 120V, 20 AMP, +48" AFF
- GFCI-1 DUPLEX RECEPTACLE, GROUND FAULT CIRCUIT INTERRUPTER, +42" AFF
- GFCI-2 DUPLEX RECEPTACLE, GROUND FAULT CIRCUIT INTERRUPTER, +24" AFF
- V MECHANICAL EXHAUST SYSTEM VENT, VENTS TO OUTSIDE, +108" AFF
- Thermostat symbol THERMOSTAT FOR RADIANT FLOOR HEAT, +42" AFF
- S SINGLE POLE VENT SWITCH, +42" AFF
- S<sub>DM</sub> SINGLE POLE SWITCH W/ DIMMER, +42" AFF
- S<sub>3DM</sub> 3-WAY SWITCH W/ DIMMER, +42" AFF
- RECESSED LIGHT FIXTURE RATED FOR WET LOCATIONS

MECHANICAL PLAN & LEGEND DRAWN IN AUTOCAD



ELEVATION DRAWN IN AUTOCAD



DRAWN IN SKETCH UP AND RENDERED IN ENSCAPE



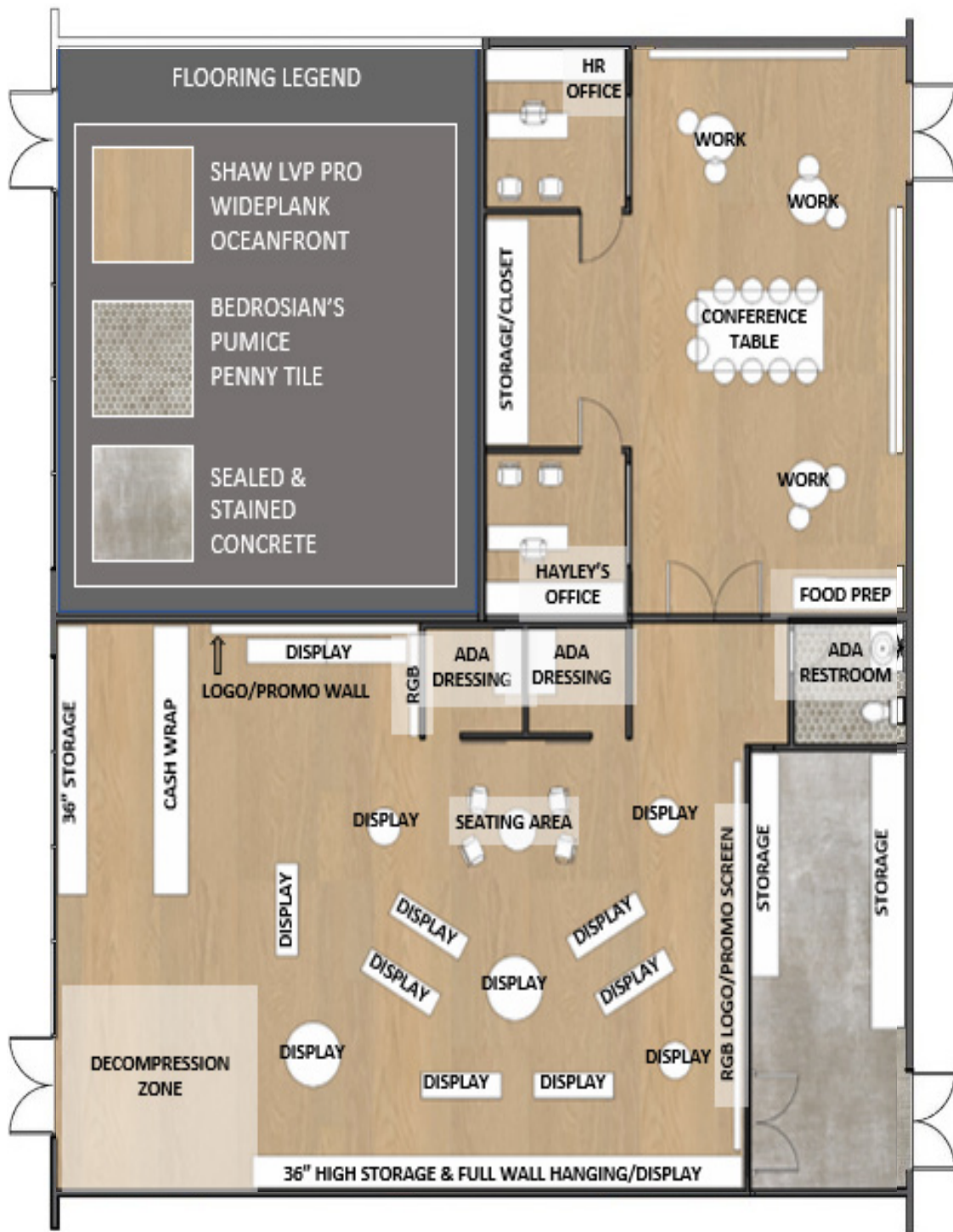
# L. HARRIS BOUTIQUE



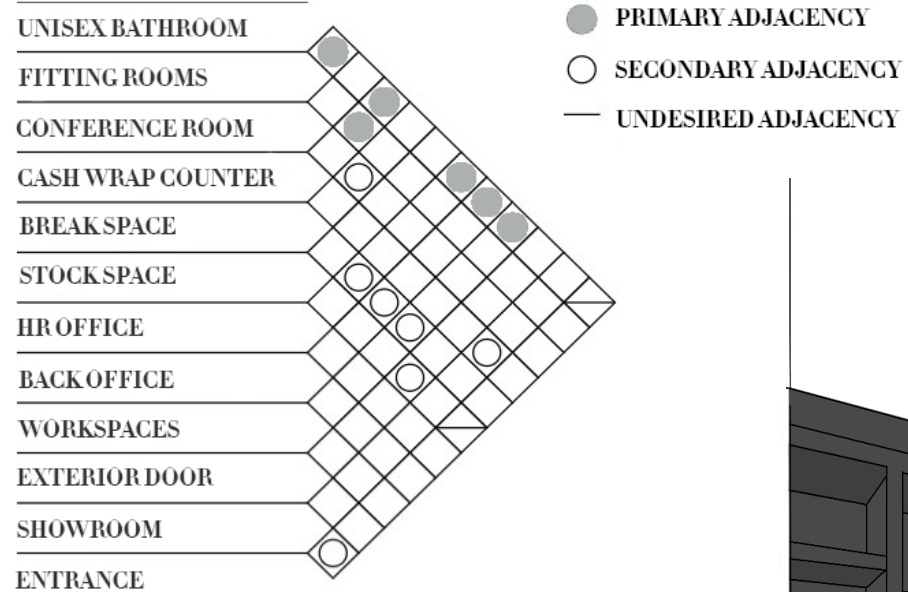
L. Harris, a high end men's fashion boutique of 4,200 sqft, has been redesigned to provide a refined and exclusive atmosphere. With the addition of wood, metals, and brass fixtures the space is able to create a modern look that suits well with the brand.

DISPLAY AREA DRAWN IN SKETCH UP AND RENDERED IN ENSCAPE





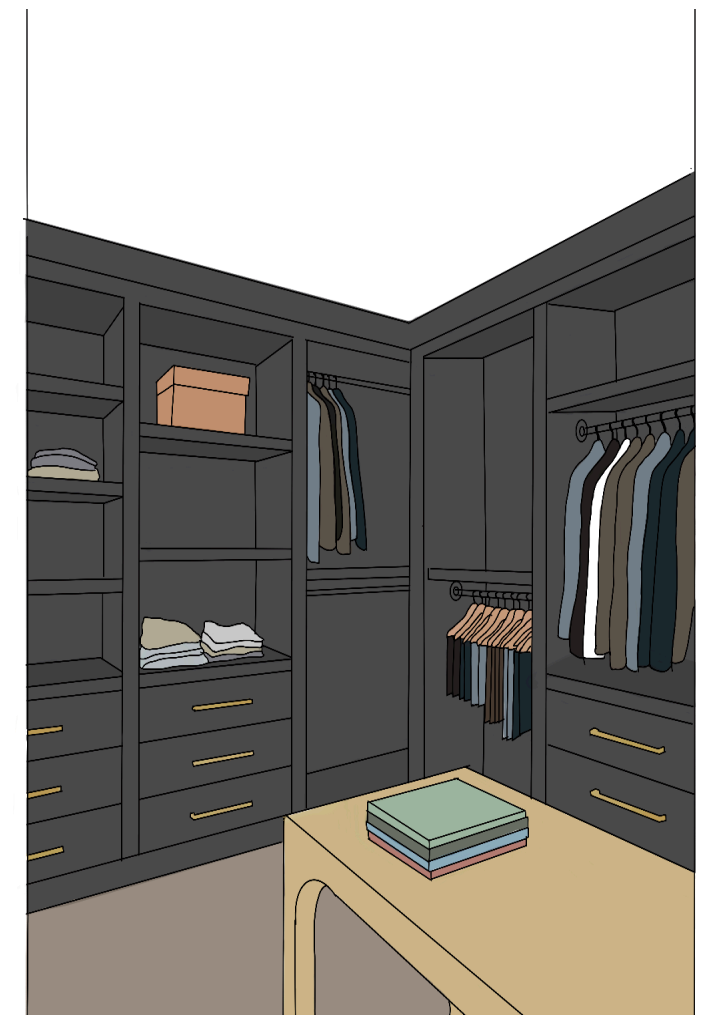
FLOOR PLAN DRAWN IN AUTOCAD AND RENDERED IN PHOTOSHOP BY TEAM MEMBER



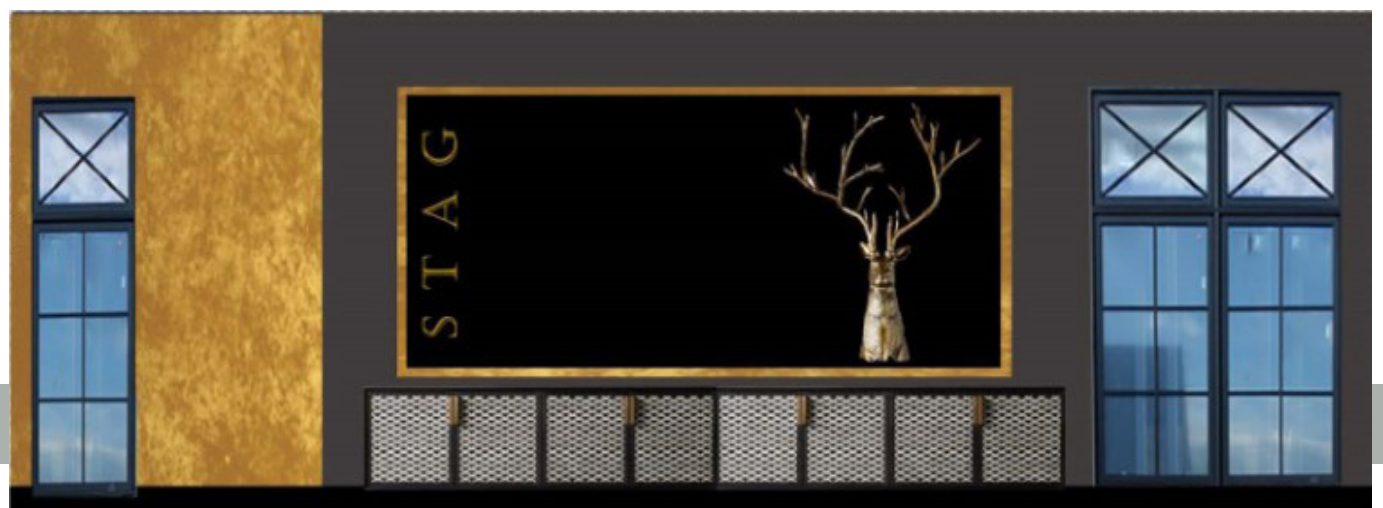
ADJACENCY MATRIX CREATED IN PHOTOSHOP



EAST WALL DRAWN IN AUTOCAD AND RENDERED IN PHOTOSHOP BY TEAM MEMBER



SKETCHED IN PROCREATE BY SELF

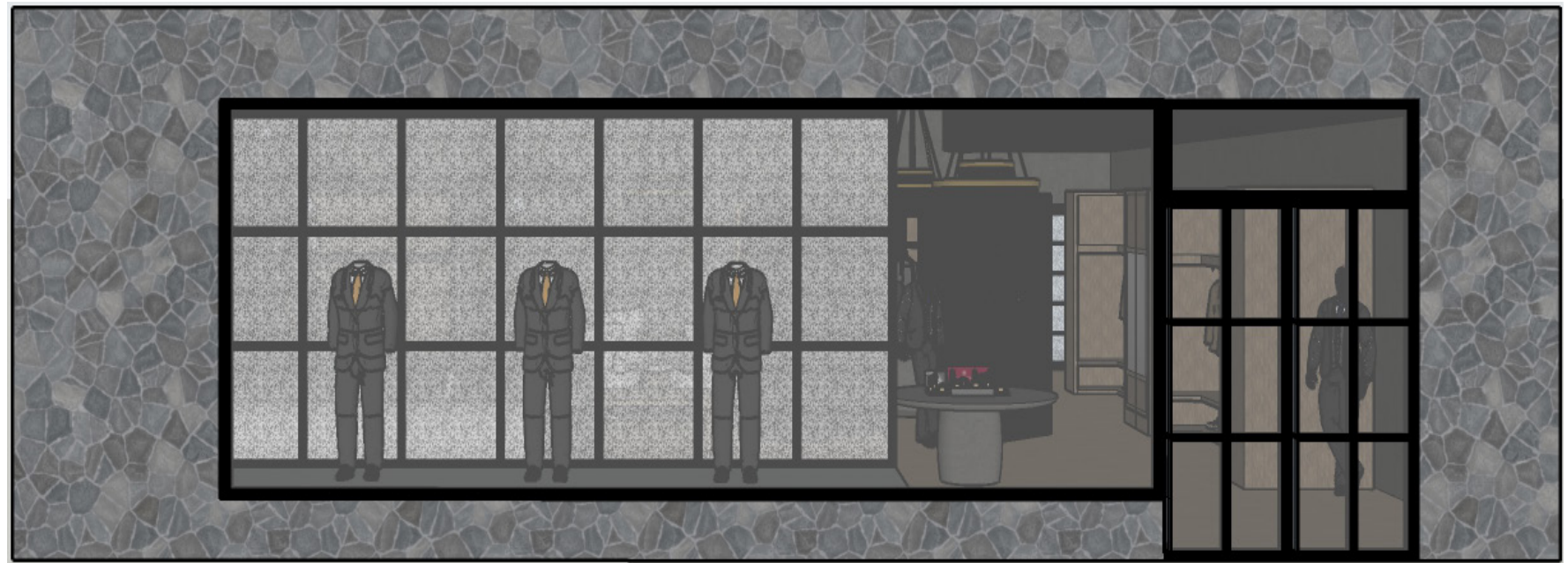
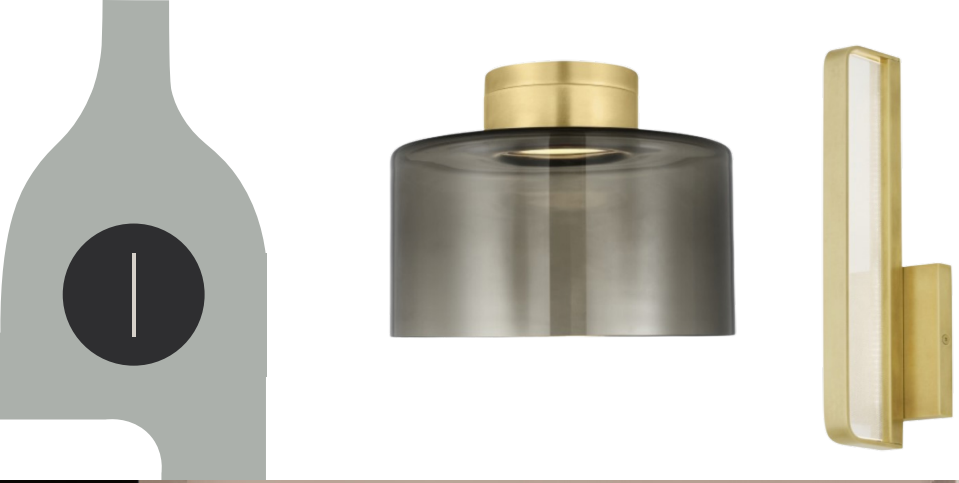






CASH WRAP AREA DRAWN IN SKETCH UP AND RENDERED  
IN ENSCAPE BY SELF





FRONT STORE ELEVATION DRAWN AND RENDERED IN SKETCH UP



FITTING ROOM DRAWN IN SKETCH UP AND RENDERED IN ENSCAPE

RESTROOM DRAWN IN SKETCH UP AND RENDERED IN ENSCAPE





# WALLACE KITCHEN

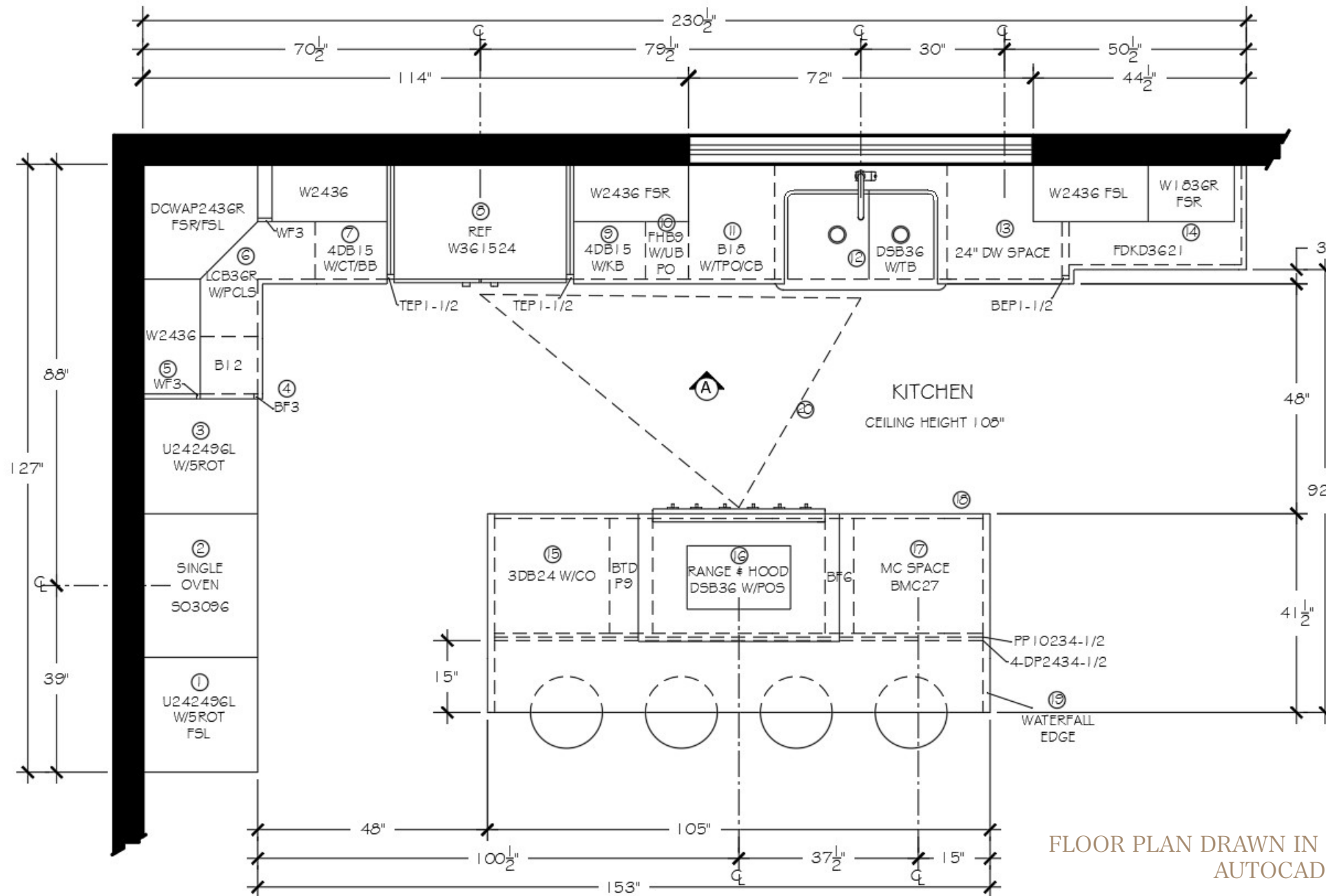


The Wallace family has a 1,950 sqft home that was in need of a kitchen remodel in order to accommodate their mother who was recently diagnosed with MS and uses a wheelchair. Their new kitchen is designed to be NKBA approved and provides a functional ADA compliant space for the family to enjoy.

KITCHEN DRAWN IN SKETCH UP AND RENDERED IN ENSCAPE



## FLOOR PLAN SPECIFICATIONS



- ① U242496L F5L W/ 5 ROLL OUT TRAYS  
HAFELE #557.59.117  
ROLL-OUT TRAY, MAPLE  
19-9/16" W x 21-1/8" D x 3-1/2" H  
FINISH: MAPLE  
QUANTITY: 5
- ② SINGLE OVEN  
THERMADOR, MDL. ME301YP  
30-INCH SINGLE BUILT-IN OVEN  
29-3/4" W x 24-1/2" D x 29" H  
FINISH: STAINLESS STEEL
- ③ U242496L W/ 5 ROLL OUT TRAYS  
HAFELE #557.59.117  
ROLL-OUT TRAY, MAPLE  
19-9/16" W x 21-1/8" D x 3-1/2" H  
FINISH: MAPLE  
QUANTITY: 5
- ④ BF3 CUT TO APPROX. 1"
- ⑤ WF3 CUT TO APPROX. 1"
- ⑥ LCB36R W/ PIE-CUT LAZY SUSAN  
REV-A-SHELF #LD-4BW-942-20-1  
LD-4BW SERIES PIE CUT  
28" W x 28" D x 26" H  
FINISH: NATURAL MAPLE
- ⑦ 4DB15 W/ CUTLERY TRAY AND BREAD BOX  
REV-A-SHELF #4WCT-1  
WOOD CUTLERY TRAY INSERT  
14-5/8" W x 22" D x 2-7/8" H  
FINISH: SEMI-GLOSS  
REV-A-SHELF #BDC-200-15  
BREAD DRAWER COVER  
11-5/8" W x 21-3/4" D x 3/8" H  
FINISH: TEXTURED
- ⑧ REFRIGERATOR  
THERMADOR, MDL. T36BT915N5  
36-INCH STAINLESS STEEL BUILT-IN FRENCH  
DOOR BOTTOM FREEZER, PRE-ASSEMBLED  
35-3/4" W x 24-3/4" D x 83-3/4" H  
FINISH: STAINLESS STEEL
- ⑨ 4DB15 W/ KNIFE BLOCK  
REV-A-SHELF #4WDB-1  
DOUBLE KNIFE BLOCK  
12-1/2" W x 18" D x 2" H  
FINISH: SEMI-GLOSS

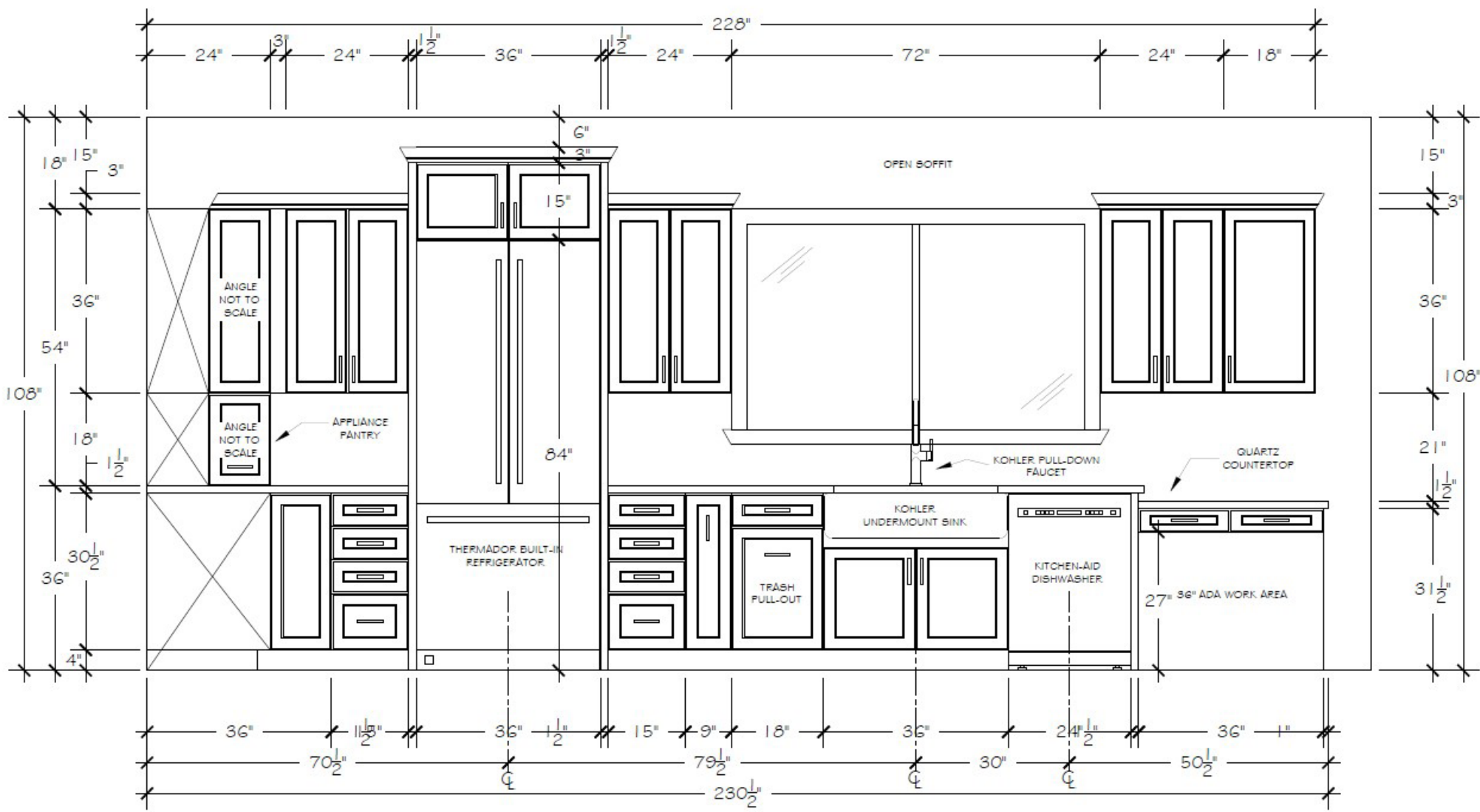
- ⑩ FHB9 W/ UTILITY BASE PULL-OUT  
REV-A-SHELF #5322UT-BC5C-5-MP  
CONTEMPORARY BASE CABINET PULLOUT W/  
UTENSIL BINS  
8-1/2" W x 21-3/4" D x 25" H  
FINISH: WOOD
- ⑪ B18 W/ TRASH PULL-OUT AND CUTTING BOARD  
REV-A-SHELF #4WCSC-2135DM-2  
WOOD BOTTOM MOUNT WASTE CONTAINER  
18" W x 21-3/4" D x 20-5/8" H  
FINISH: WOOD  
REV-A-SHELF #4WCCB-18H5C-1  
NATURAL MAPLE CUT-OUT CUTTING BOARD  
DRAWER  
15" W x 22" D x 4-1/2" H  
FINISH: SEMI-GLOSS
- ⑫ DSB36 W/ TOWEL BAR  
KNAPE & VOGT #P793 ANO  
PULL-OUT TOWEL BAR  
4-13/16" W x 17-3/4" D x 1-5/16" H

- DOUBLE-BOWL SINK  
KOHLER, MDL. K-6427  
UNDERMOUNT SMART DIVIDE LARGE/MEDIUM  
FARMHOUSE SINK  
35-11/16" W x 21-9/16" D x 9-5/8" H  
FINISH: WHITE
- FAUCET  
KOHLER, MDL. K-22972  
PULL-DOWN SINGLE HANDLE KITCHEN FAUCET  
2-1/2" W x 8-9/16" D x 17-3/16" H  
FINISH: BRUSHED MODERNE BRASS
- GARBAGE DISPOSAL  
INSINKERATOR, MDL. 79221K-ISE  
EVOLUTION SUPREME 55 GARBAGE DISPOSAL  
9" W x 9" D x 9" H  
FINISH: STAINLESS STEEL
- ⑬ DISHWASHER  
KITCHENAID, MDL. KDFM404KPS  
44DBA DISHWASHER IN PRINTSHIELD FINISH  
WITH FREEFLEX THIRD RACK  
23-7/8" W x 24-1/2" D x 33-5/8" H  
FINISH: STAINLESS STEEL

- ⑭ CROWN MOLDING  
4 PCS. 3CM-8
- ⑮ 3DB24 W/ CHARGING OUTLET  
DOCKING DRAWER #1514-232W  
BLADE DUO IN DRAWER OUTLET  
13" W x 2-1/2" D x 4-10/16" H
- ⑯ DSB36 W/ PULL-OUT SHELF  
REV-A-SHELF #5330-33BC5C-MP  
MAPLE SOLID BOTTOM CHROME WIRE FRAME  
CONTEMPORARY SINGLE PULLOUT BASKET  
32-11/16" W x 21-3/4" D x 6-1/2" H  
FINISH: NATURAL MAPLE
- RANGE  
THERMADOR, MDL. PCG36GW  
36-INCH GAS RANGETOP  
35-15/16" W x 25-13/16" D x 8-1/8" H  
FINISH: STAINLESS STEEL

- HOOD  
THERMADOR, MDL. HPIN42WS  
42-INCH BOX ISLAND HOOD  
41-15/16" W x 26-11/16" D x 5-1/4" H x 30"  
(CHIMNEY HEIGHT)  
600-1000 CFM  
FINISH: STAINLESS STEEL
- ⑰ MICROWAVE  
KITCHEN AID, MDL. KMBD104G55  
24" UNDER-COUNTER MICROWAVE OVEN DRAWER  
23-7/8" W x 23-7/8" D x 16" H  
FINISH: STAINLESS STEEL
- ⑱ PLYWOOD TOE-KICK  
3 PCS. TK-8
- ⑳ QUARTZ COUNTERTOP W/ WATERFAL EDGE  
ALL COUNTERTOP CORNERS ARE ROUND  
ISLAND COUNTERTOP IS REINFORCED W/ INTERNAL  
BRACKETS
- ㉑ WORK TRIANGLE MEETS THE MINIMUM OF 4" AND  
MAXIMUM OF 9" BETWEEN PRIMARY WORK AREAS

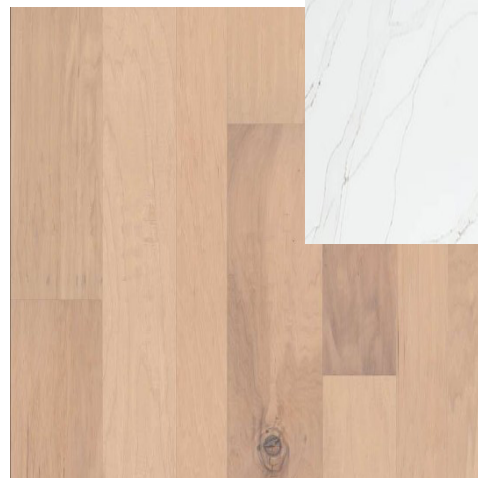




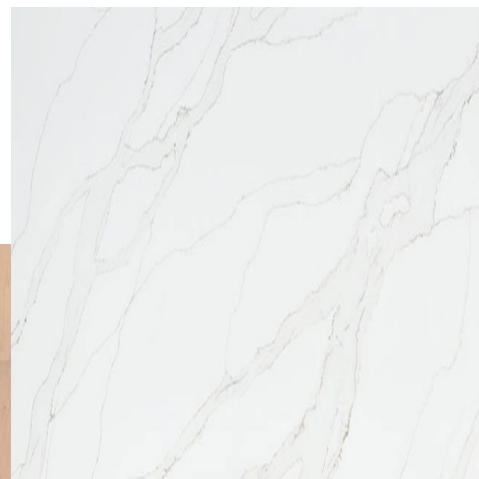
NORTH WALL ELEVATION DRAWN IN AUTOCAD



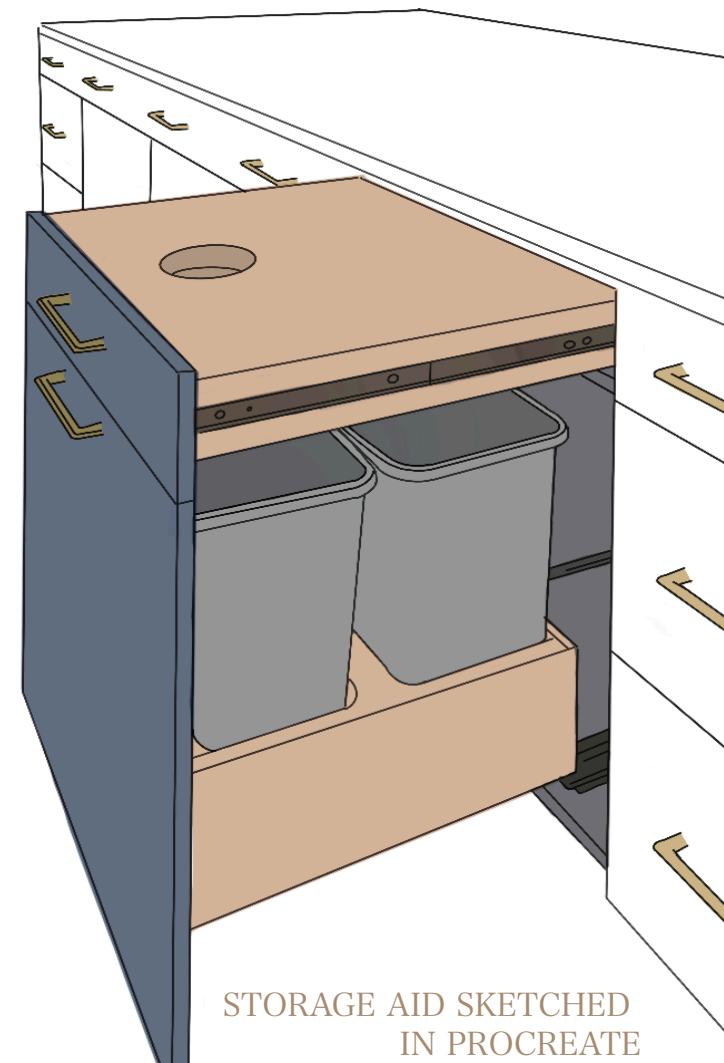
STAINLESS STEEL APPLIANCES



HARDWOOD FLOORING



CALACATTA COUNTERTOP



STORAGE AID SKETCHED IN PROCREATE



# TRIAD III BUILDING



The Triad III building (16,686 sqft), located in Salt Lake City, was remodeled to accommodate four separate suites including the Recording Studio, Hybrid Offices, Photography Studio, and Counseling Services. The goal was to provide a friendly, professional, and positive work environment to improve the working experience of employees.

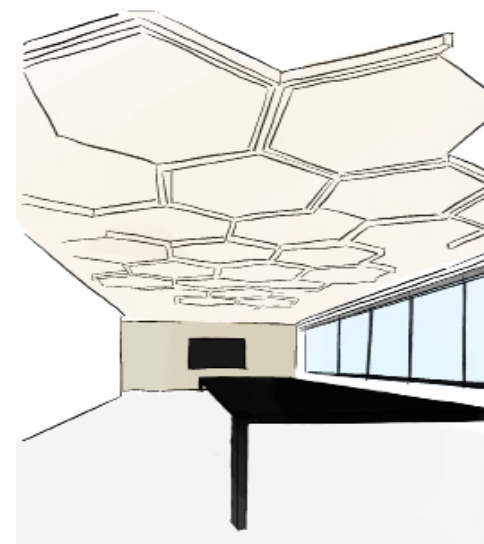
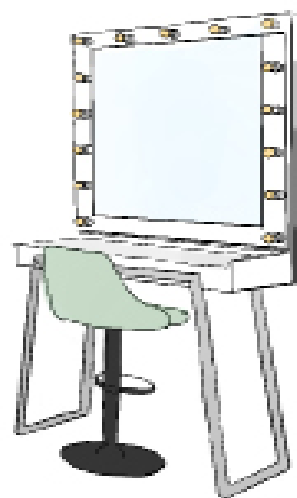
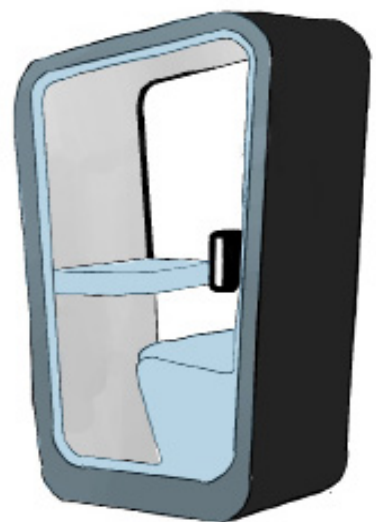




FLOOR PLAN DRAWN IN REVIT

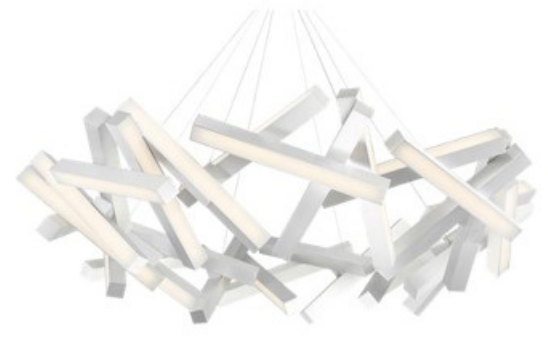


BUBBLE DIAGRAM DRAWN ON IN DESIGN

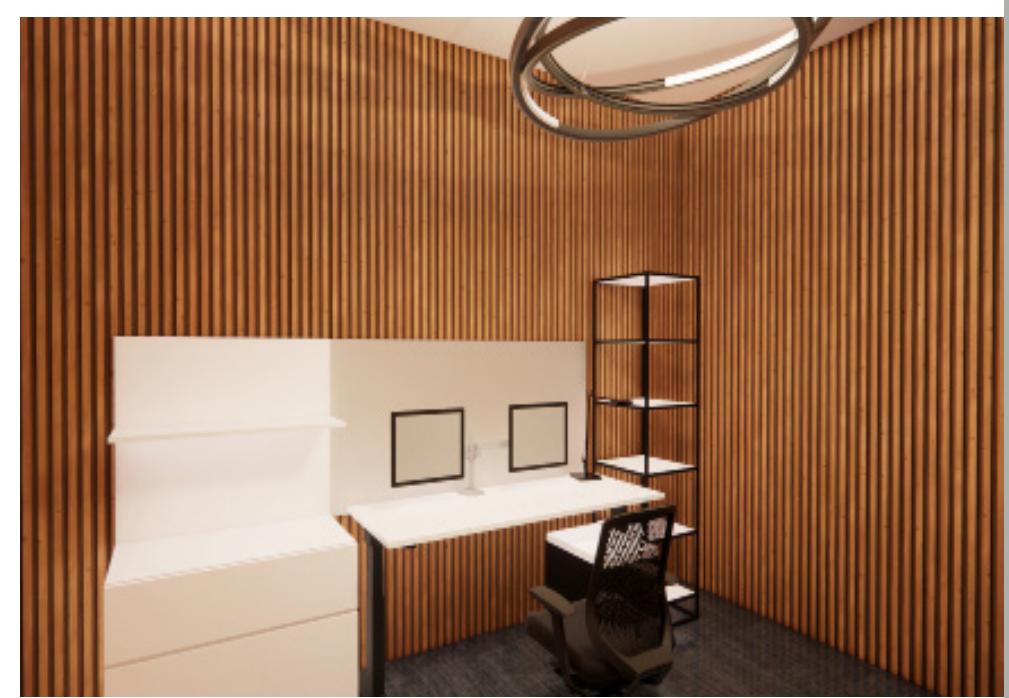


INSPIRATION SKETCHES DRAWN IN PROCREATE





RECEPTION & LOBBY DRAWN IN REVIT AND RENDERED IN ENSCAPE



PRODUCTION OFFICE DRAWN IN REVIT AND RENDERED IN ENSCAPE



CONFERENCE ROOM DRAWN IN REVIT AND RENDERED IN ENSCAPE





BOOTH PENDANT



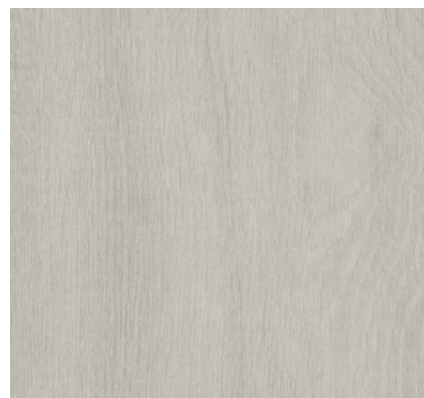
ISLAND PENDANTS



COLLABORATION / BREAK AREA DRAWN IN REVIT AND RENDERED IN ENSCAPE



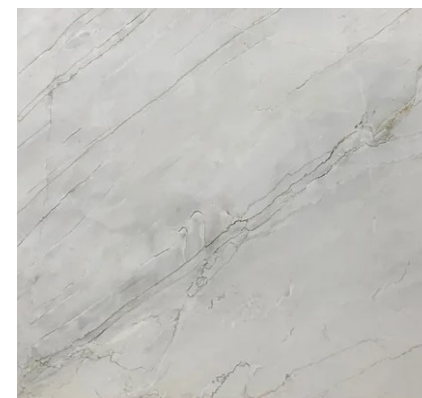
FIRST FLOOR CARPET



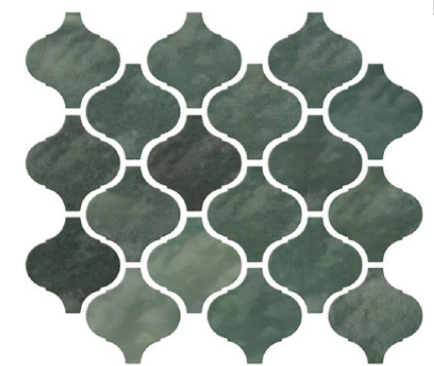
SECOND FLOOR LVT



RUG IN LOBBY / WAITING AREA



BREAKROOM QUARTZ COUNTERTOP



BREAKROOM BACKSPLASH

